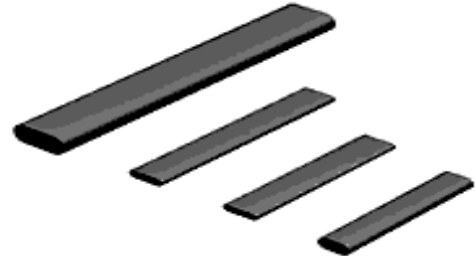




ANTENNA BAR – AP TYPE

(1) ORDERING CODE

Material _____ EA2G AP 2 × 8 × 45
 Type _____
 Outside Diameter C _____
 Width B _____
 Length A _____



(2) SUITABLE MATERIAL

EA2G EQ2M EL8H EQ5B

(3) SHAPE AND DIMENSIONS



UNIT: MM

CORES	A	B	C
AP 1.7×8×40	40.00±0.80	1.70 ⁺⁰ _{-0.3}	8.00 ⁺⁰ _{-0.4}
AP 1.9×3×49	49.00±1.00	1.90 ⁺⁰ _{-0.3}	3.00 ⁺⁰ _{-0.3}
AP 1.9×3×50	50.00±1.00	1.90 ⁺⁰ _{-0.3}	3.00 ⁺⁰ _{-0.3}
AP 2×8×40	40.00±0.80	2.00 ⁺⁰ _{-0.3}	8.00 ⁺⁰ _{-0.4}
AP 2×8×45	45.00±1.00	2.00 ⁺⁰ _{-0.3}	8.00 ⁺⁰ _{-0.4}
AP 2×8×50	50.00±1.00	2.00 ⁺⁰ _{-0.3}	8.00 ⁺⁰ _{-0.4}
AP 3×5×40	40.00±0.80	3.00 ⁺⁰ _{-0.3}	5.00 ⁺⁰ _{-0.3}
AP 3×6×35	35.00±0.80	3.00 ⁺⁰ _{-0.3}	6.00 ⁺⁰ _{-0.4}
AP 3×7×36	36.00±0.80	3.00 ⁺⁰ _{-0.3}	7.00 ⁺⁰ _{-0.4}
AP 3×8×25	25.00±0.50	3.00 ⁺⁰ _{-0.3}	8.00 ⁺⁰ _{-0.4}
AP 3×8×30	30.00±0.50	3.00 ⁺⁰ _{-0.3}	8.00 ⁺⁰ _{-0.4}
AP 3×8×40	40.00±0.80	3.00 ⁺⁰ _{-0.3}	8.00 ⁺⁰ _{-0.4}
AP 3×8×50	50.00±1.00	3.00 ⁺⁰ _{-0.3}	8.00 ⁺⁰ _{-0.4}
AP 4×4.5×35	35.00±0.80	4.00 ⁺⁰ _{-0.3}	4.50 ⁺⁰ _{-0.3}
AP 4×4.5×45	45.00±1.00	4.00 ⁺⁰ _{-0.3}	4.50 ⁺⁰ _{-0.3}



ANTENNA BAR – AP TYPE

CORES	A	B	C
AP 4×4.5×50	50.00±1.00	4.00 ⁺⁰ _{-0.3}	4.50 ⁺⁰ _{-0.3}
AP 4×5×50	50.00±1.00	4.00 ⁺⁰ _{-0.3}	5.00 ⁺⁰ _{-0.3}
AP 4×6×30	30.00±0.50	4.00 ⁺⁰ _{-0.3}	6.00 ⁺⁰ _{-0.4}
AP 4×6×33	33.00±0.50	4.00 ⁺⁰ _{-0.3}	6.00 ⁺⁰ _{-0.4}
AP 4×8×34.5	34.50±0.50	4.00 ⁺⁰ _{-0.3}	8.00 ⁺⁰ _{-0.4}
AP 4×8×35	35.00±0.80	4.00 ⁺⁰ _{-0.3}	8.00 ⁺⁰ _{-0.4}
AP 4×8×40	40.00±0.80	4.00 ⁺⁰ _{-0.3}	8.00 ⁺⁰ _{-0.4}
AP 4×8×45	45.00±1.00	4.00 ⁺⁰ _{-0.3}	8.00 ⁺⁰ _{-0.4}
AP 4×8×50	50.00±1.00	4.00 ⁺⁰ _{-0.3}	8.00 ⁺⁰ _{-0.4}
AP 4×10×40	40.00±0.80	4.00 ⁺⁰ _{-0.3}	10.0 ⁺⁰ _{-0.4}
AP 4×10×45	45.00±1.00	4.00 ⁺⁰ _{-0.3}	10.0 ⁺⁰ _{-0.4}
AP 4×10×50	50.00±1.00	4.00 ⁺⁰ _{-0.3}	10.0 ⁺⁰ _{-0.4}
AP 4×12×50	50.00±1.00	4.00 ⁺⁰ _{-0.3}	12.0 ⁺⁰ _{-0.4}
AP 4×13×55	55.00±1.00	4.00 ⁺⁰ _{-0.3}	13.0 ⁺⁰ _{-0.4}
AP 5×6×25	25.00±0.50	5.00 ⁺⁰ _{-0.3}	6.00 ⁺⁰ _{-0.4}
AP 5×6×30	30.00±0.50	5.00 ⁺⁰ _{-0.3}	6.00 ⁺⁰ _{-0.4}
AP 5×6×32	32.00±0.50	5.00 ⁺⁰ _{-0.3}	6.00 ⁺⁰ _{-0.4}
AP 5×6×35	35.00±0.50	5.00 ⁺⁰ _{-0.3}	6.00 ⁺⁰ _{-0.4}
AP 5×8×45	45.00±1.00	5.00 ⁺⁰ _{-0.3}	8.00 ⁺⁰ _{-0.4}
AP 5×8×47.5	47.50±1.00	5.00 ⁺⁰ _{-0.3}	8.00 ⁺⁰ _{-0.4}
AP 5×8×50	50.00±1.00	5.00 ⁺⁰ _{-0.3}	8.00 ⁺⁰ _{-0.4}
AP 5×8×60	60.00±1.00	5.00 ⁺⁰ _{-0.3}	8.00 ⁺⁰ _{-0.4}
AP 7×8×49	49.00±1.00	7.00 ⁺⁰ _{-0.4}	8.00 ⁺⁰ _{-0.4}



ANTENNA BAR – AR TYPE

(1) ORDERING CODE

EA2G AR 8 × 100

Material _____

Type _____

Outside Diameter C _____

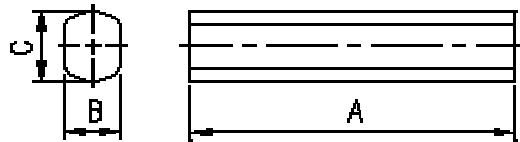
Length A _____



(2) SUITABLE MATERIAL

EA2G EQ2M EL8H EQ5B

(3) SHAPE AND DIMENSIONS



UNIT: MM

CORES	A	B	C
AR 3×32	32.00±0.50	3.00 ⁺⁰ _{-0.2}	3.00 ⁺⁰ _{-0.3}
AR 3×38	38.00±0.50	3.00 ⁺⁰ _{-0.2}	3.00 ⁺⁰ _{-0.3}
AR 4×40	40.00±1.00	4.00 ⁺⁰ _{-0.2}	4.00 ⁺⁰ _{-0.3}
AR 6×40	40.00±1.00	5.00 ⁺⁰ _{-0.2}	6.00 ⁺⁰ _{-0.4}
AR 6×50	50.00±1.00	5.00 ⁺⁰ _{-0.2}	6.00 ⁺⁰ _{-0.4}
AR 7×77	77.00 ^{+2.0} ₋₀	6.00 ^{+0.5} ₋₀	7.00 ⁺⁰ _{-0.4}
AR 8×40	40.00±1.00	7.00 ⁺⁰ _{-0.3}	8.00 ^{+0.1} _{-0.4}
AR 8×45	45.00±1.00	7.00 ⁺⁰ _{-0.3}	8.00 ^{+0.1} _{-0.4}
AR 8×50	50.00±1.00	7.00 ⁺⁰ _{-0.4}	8.00 ⁺⁰ _{-0.5}
AR 8×55	55.00±1.00	7.00 ⁺⁰ _{-0.3}	8.00 ^{+0.1} _{-0.4}
AR 8×60	60.00±1.00	7.00 ⁺⁰ _{-0.3}	8.00 ^{+0.1} _{-0.4}
AR 8×70	70.00±1.00	7.00 ⁺⁰ _{-0.3}	8.00 ^{+0.1} _{-0.4}
AR 8×75	75.00±1.00	7.00 ⁺⁰ _{-0.3}	8.00 ^{+0.1} _{-0.4}
AR 8×80	80.00±1.00	7.00 ⁺⁰ _{-0.3}	8.00 ^{+0.1} _{-0.4}
AR 8×90	90.00±1.50	7.00 ⁺⁰ _{-0.3}	8.00 ^{+0.1} _{-0.4}
AR 8×100	100.0±1.50	7.00 ⁺⁰ _{-0.3}	8.00 ^{+0.1} _{-0.4}
AR 10×30	30.00±1.00	9.00 ⁺⁰ _{-0.3}	10.00 ⁺⁰ _{-0.4}



ANTENNA BAR – AR TYPE

CORES	A	B	C
AR 10×50	50.00±1.00	9.00 ⁺⁰ _{-0.3}	10.00 ⁺⁰ _{-0.4}
AR 10×55	55.00±1.00	9.00 ⁺⁰ _{-0.3}	10.00 ⁺⁰ _{-0.4}
AR 10×60	60.00±1.00	9.00 ⁺⁰ _{-0.3}	10.0 ⁺⁰ _{-0.4}
AR 10×70	70.00±1.50	9.00 ⁺⁰ _{-0.3}	10.00 ⁺⁰ _{-0.4}
AR 10×80	80.00±1.50	9.00 ⁺⁰ _{-0.3}	10.00 ⁺⁰ _{-0.4}
AR 10×90	90.00±1.50	9.00 ⁺⁰ _{-0.3}	10.00 ⁺⁰ _{-0.4}
AR 10×100	100.00±2.00	9.00 ⁺⁰ _{-0.3}	10.00 ⁺⁰ _{-0.4}
AR 10×120	120.00±2.00	9.00 ⁺⁰ _{-0.3}	10.00 ⁺⁰ _{-0.4}
AR 10×140	140.00±2.00	9.00 ⁺⁰ _{-0.3}	10.00 ⁺⁰ _{-0.4}
AR 12×120	120.00±2.00	11.00 ⁺⁰ _{-0.5}	12.00 ⁺⁰ _{-0.6}
AR 12×200	200.00±2.50	11.00 ⁺⁰ _{-0.5}	12.00 ⁺⁰ _{-0.6}